

BMW key pro user manual

Introduction

BMW key programming device and software are for vehicles equipped with EWS module , coverage 1994-2004 that have EWS module(including EWS2, EWS3 and EWS3+, Rover75, MINI, RangeRover, FreeLander, Discovery).You can programm new keys when all keys are lost or stolen by this device. Of cause be able to add new keys.

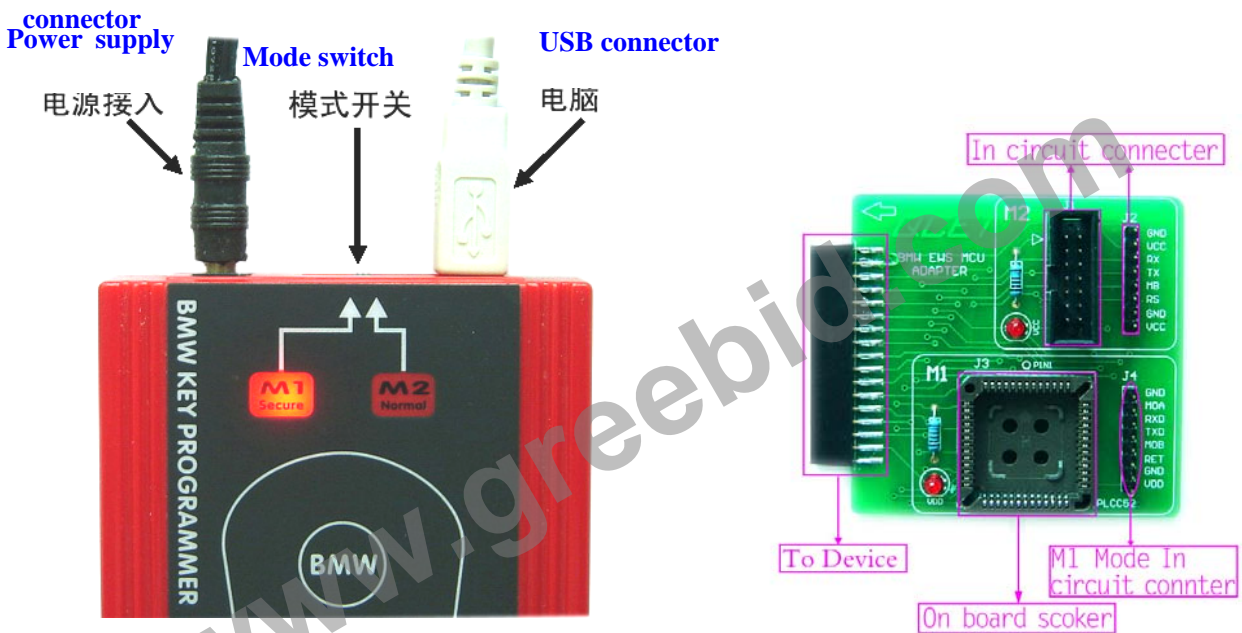
<http://www.cnreliable.com>

Support

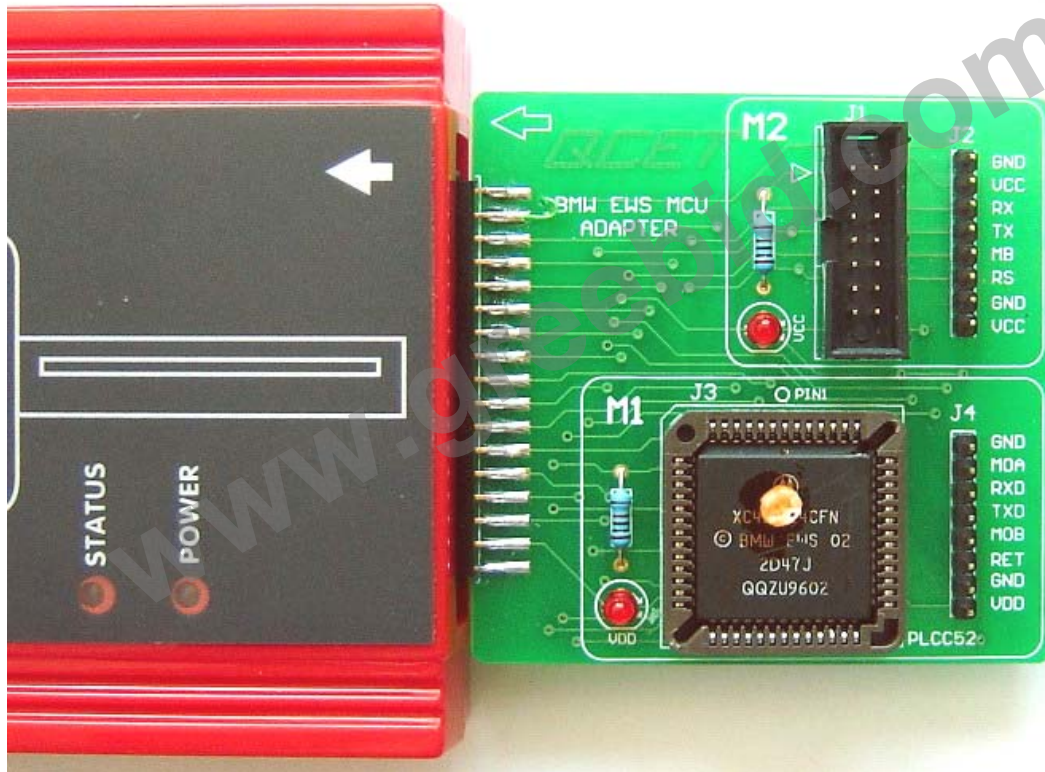
EWS 2,EWS 3,EWS 3+:Include 0D46J, 1D47J, 2D47J, **2D47J(with secured)** Safe for reading data from EWS (with secured).

Part One: Install hardware

Connect with DC-12V power supply, turn the Mode switch to M1, the indicator light is on, connect the device and PC by USB line. As below picture:



BMW key pro user manual



2D47J).

On board connect. For EWS2 (MCU Masker 1D47J), EWS3 (MCU Masker



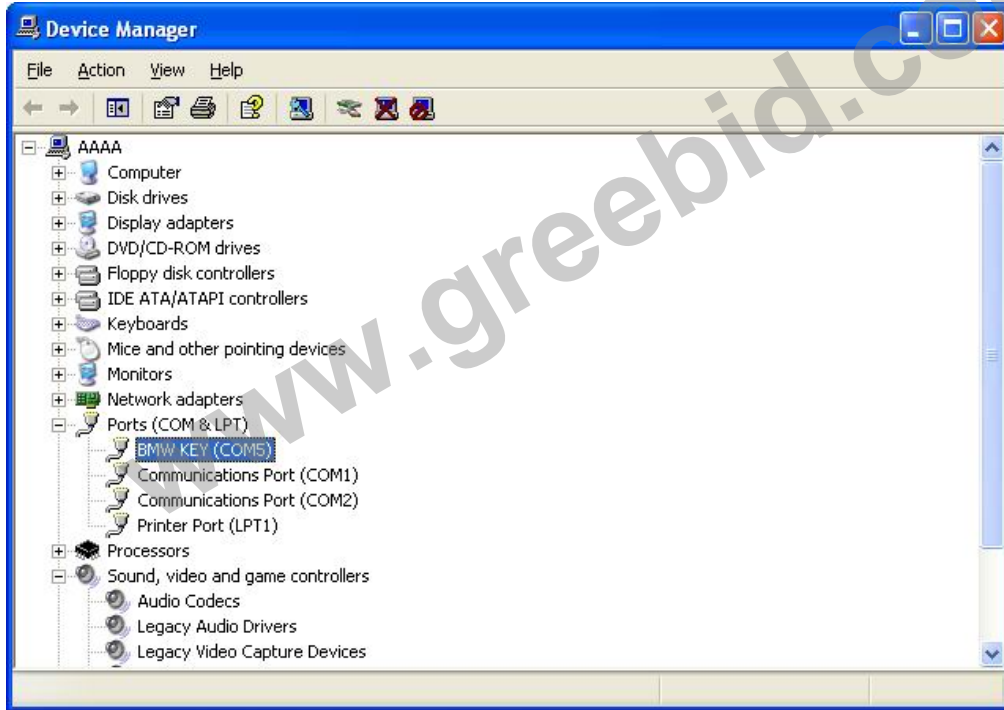
In circuit connect. For EWS2 (MCU Masker 2D47J).

BMW key pro user manual

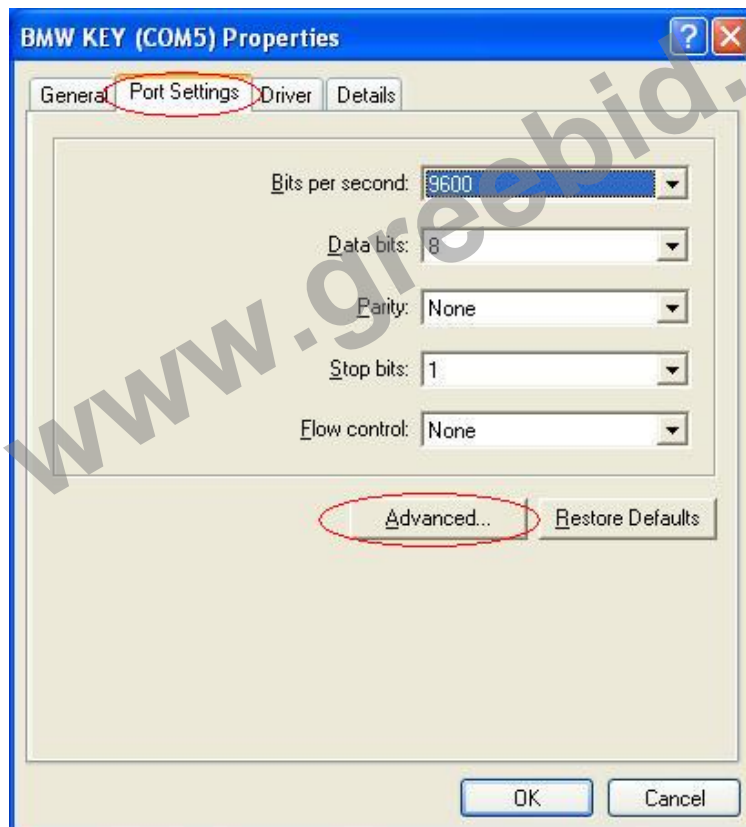
Part Two: Port setting

If the Serial Port Number is greater than COM4, you must choose the port in COM1-COM4.

Go to [Device Manager], it shows as below:

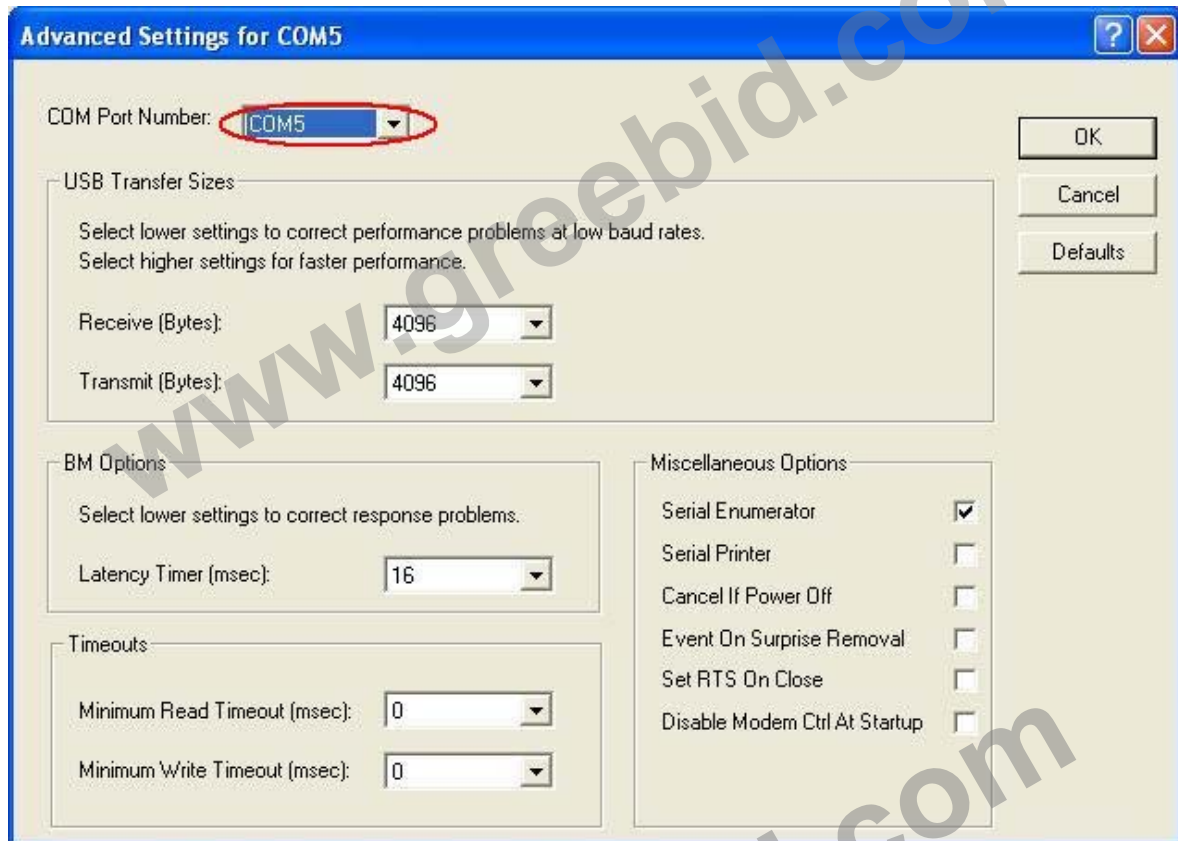


Choose [BMW KEY (COM5)], right click choose Properties, it shows as below:



BMW key pro user manual

Go to **[Port Settings]** panel, then click [Advanced...], it shows as below: Choose one COM Port Number (COM1-COM4), and then click OK to finish the operation.



Part Three: Operations

Key Programmer principle: Use the device to read the data of EWS (anti-thief control box), then write the data into a new key or key-chip. Please note, a key or key-chip can be written just once, can not be rewritten. That means the old key cannot be programmed again. The key or key-chip which you want to be programmed must be new.

1. M1 (secure) mode

Take the "EWS 3 A" of mask 2D47J as an example. Select this type then click **[Zoom in]**, follow the related operations, click **[Next]**. As below shows:

BMW key pro user manual



Software will remind you switch to M1 mode, the red indicator light should light now, then click [OK] turn into following screen:



Click [Read], then SAVE data, please mark down the save path, usually the default save path is **C:\Program Files\BMW_KEY\UserBackfile**. Please also memorize the file name, such as **[EWS 3 A_2D47J_2001-2006_2007-03-23_0006.BIN]**. Save the data then click [MAKE KEY], now it will display as below. In addition, [Open] and [Write] button is used for writing or other purpose by well-informed user. So these two buttons are out of the scope of regular operation.

BMW key pro user manual



Operation steps: Switch to M2 mode, the M2 indicator light should light.

First step: Choose the right COM port (COM1-COM4).

Second step: Input the key serial number (0~9), recommend input upward of number 4.

Third step: Open the Key matching file. Find the file on original save path, usually on path
C:\Program Files\ BMW_KEY\UserBackFile. Click [Open].

Forth step: Put the new key or key-chip on the inductive area properly, then click [Insert and program Keys].

