
Contents

I . Introduction	(1)
II .Body and Adapters	(1)
III.Operation Instruction	(3)
1. Installation	(3)
2. Operation	(3)
2-1. CPU	(3)
2-2. 8-Pin IC	(4)
2-3. How to reset the airbags not listed	(5)
3. Updating	(6)
IV. Appendix	(7)
1. GM airbags hookup	(7)
2. VW airbags hookup	(9)
3. Hyundai Elantra airbag hookup	(10)
4. the 7 th pin connection	(11)
5. IC replacement	(12)
6. Vehicles & airbags available	(13)
7. How to remove and weld the device	(14)
8. Identify the device pin's sequence	(15)
9. Standard and Non-standard IC C46	(15)
10.Trouble shooting	(16)
V . Additional Function (IMMO READ CODE).....	(17)

Attention

- ⚠ Insert the adapter first then connect the power supply!**

 - ⚠ Do not pull out or insert the adapter and device when power on!**

 - ⚠ Never weld device on the adapter when power on!**
-

Introduction

When an explosion occurs in an airbag or the SRS light is turned on, normally both airbag and the controller should be replaced. But this tool can restore the software under the conditions that there is no damage to the controller's hardware and replace the airbag only, and the controller can be used again.

Features:

1. Handhold design, big screen display.
2. Updating through Internet, quick and convenient.
3. VW airbags can be reset by K-line or OBD-II line.
4. Can read/write and save the memory of an airbag not supported at present.

Body and Adapters

.Keyboard and adapter



Items	Functions
1. CPU socket	For connecting Buick and Elantra Airbags
2. SMD area	For welding device
3. DIP socket	For inserting device into
4. 7 th pin socket	Control the volt of the 7 th pin
5. LED light	Adapter well connected light turns on
6. Power	Connect +12V
7. Display screen	Version No. 041020
8. F1	Read and save the device data into the instrument
9. Upwards	
10. F2	Write the data stored in the instrument into the device
11. Down	
12. OK	Select items
13. Update	For updating
14. ESC	To Exit

. Adapters

⚠ Very Important:

Insert the adapter first then connect the power supply!

Do not pull out or insert the adapter and device when power on!

Never weld device on the adapter when power on!

1. Be used to connect instrument and airbag controller (or its device).
2. Different connections due to different devices

Devices	8-pin IC	CPU	
Vehicles	Toyota, Honda, Nissan, Cefiro, Mazda, Mitsubishi	GM Buick, Elantra	Volkswagen
Adapter used	Universal adapter	Universal adapter	1. Adapter for VW 2. OBD-II line
Connection	Insert or weld the device into the universal adapter	Solder on circuit board and connect with CPU socket as the hookup attached shown	1. Controller removed from cars reset by K-line 2. Reset by OBD-II line

3. Universal adapter, updating line and the Adapter for VW connect to the instrument in the same way.

4. Adapters:



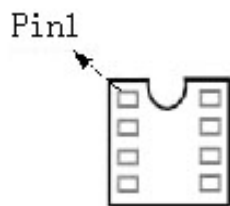
Adapter for VW



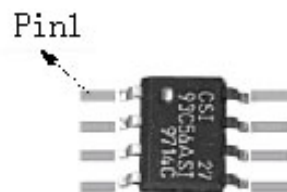
Universal Adapter



OBD-II line



DIP




SMD

Operation

. Installation

Plug in to start the instrument, vehicles display after 2 seconds.

Important: different countries use different voltages, please note the power adapter it used: the input volt should be 100~220V, frequency 50/60HZ; output 12V/1.5A; and should be 

. Operations

For some restored airbags, they should be reset by trouble code decoder before it can be use again. E.g. Volkswagen, GM Buick and Mazda.

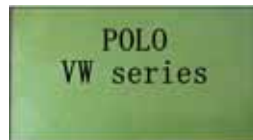
Operation for CPU

Volkswagen

1. Start the instrument, select “AIRBAG RESETER” and press ▲or▼ to select “VOLKSWAGEN”



2. Press “OK” to enter



3. Press “OK” to enter



4. Connect the airbag controller with K-line or OBD-II line then press “OK”.



5. Resetting needs several minutes, when it finished, “RESETTING SUCCESS” display. If “CHIP NOT FOUND” displays, please refer to 《TROUBLE SHOOTING》.



GM Buick

1. Start the instrument, select “AIRBAG RESETER” and press ▲or▼ to select “GM”.



2. Press “OK” to enter



3. Select Vehicle and press “OK”



4. Solder on circuit board and connect with the adapter (CPU socket) as the hookup shown then press “OK”.



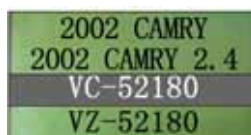
5. Airbag resetting needs several minutes, when it finished, “RESETTING SUCCESS” display. If “CHIP NOT FOUND” comes, please refer to 《TROUBLE SHOOTING》 .

**Operation for 8-pin IC**

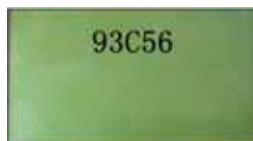
1. Start the instrument, select “AIRBAG RESETER” and press ▲or▼ to select vehicle, say Toyota.



2. Press “OK” to enter



3. Select airbag type (marked on the back of the controller) or vehicle. E.g. select “VC-52180” and press “OK”.



4. Device the controller used displays. Remove it from board and put it into/onto adapter then press “OK”.



5. When resetting finished, “RESETTING SUCCESS” displays. If “CHIP NOT FOUND” displays, please refer to 《TROUBLE SHOOTING》 .



Resetting the airbag not listed

1. Resetting principle:

Write the original data from a good airbag controller into a crashed one. So to reset an airbag not listed here, we need good airbag controllers.

Attention: The airbags type and the devices they used should be same. Check them before resetting. If you are not sure to read/write the CPU not supported, please contact the manufacturer.


2. Remove the device from the good controller then put it into/onto the adapter and connect the adapter with instrument.
3. Start the instrument, select “AIRBAG RESETER” and select “DEVICE OPERATE”



4. Press “OK”




5. Select device type. Press “F1” to read and save the device data into the instrument.



SAVING PLEASE
WAIT...

6. Saving need several seconds. “SAVING SUCCESS” when saving completed.




SAVE SUCCESS

7. Take the device out of adapter and put the device from a crashed controller into the adapter then press “F2” to write the data saved in the instrument into the device.



RESETTING
PLEASE WAIT...

8. Mount this device back onto the board after “RESETTING SUCCESS”.




RESETTING
SUCCESS

9. Error when reading and writing, refer to 《TROUBLE SHOOTING》 .

. Updating

1. Download update software from our website and install.
2. Connect the resetting tool to Internet.
3. Start the resetting tool and press “0” to update.



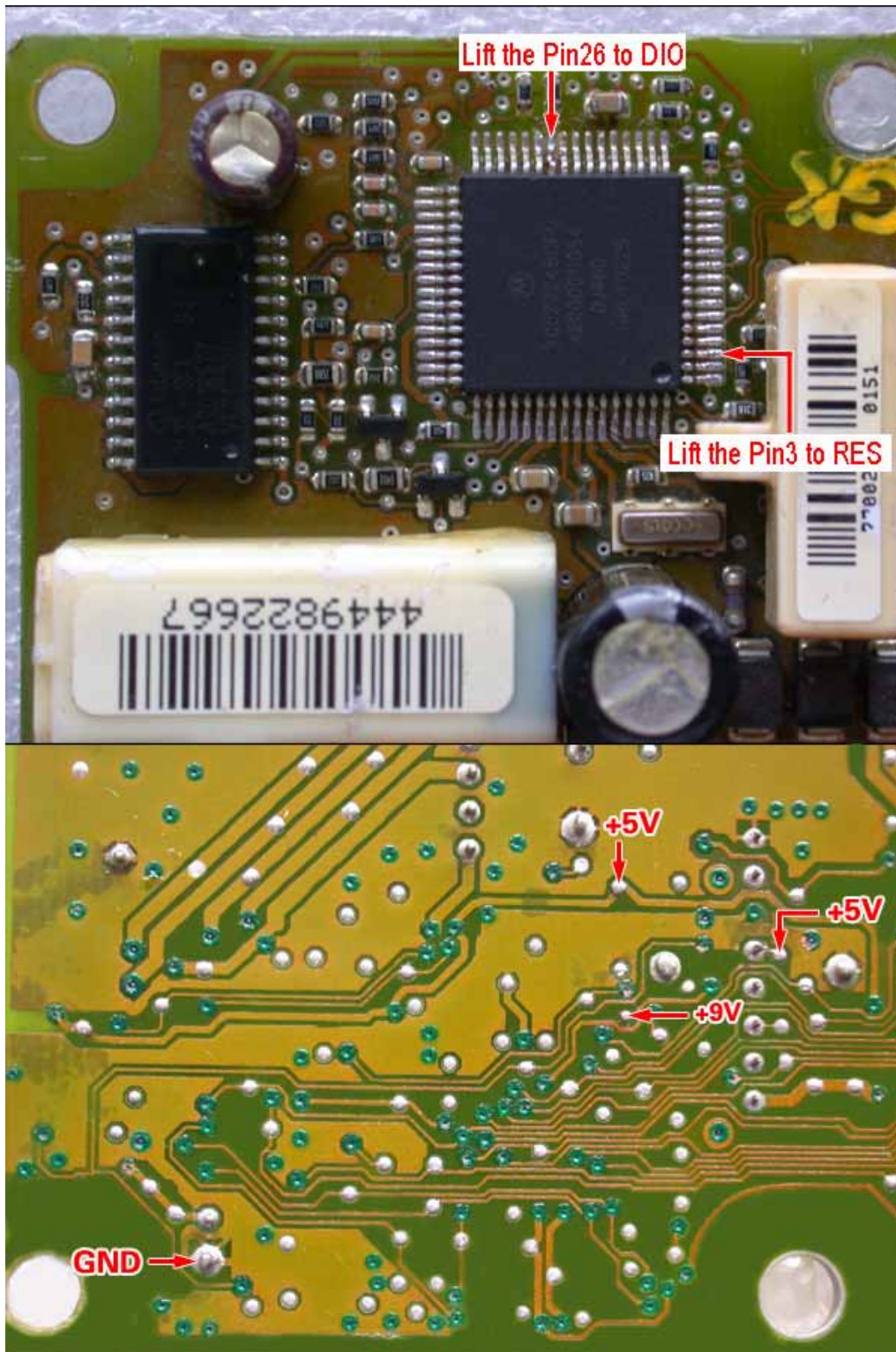
准备升级
(ready to update)

4. Click “Airbag Resetting Tool Update” on the desk, and select “Update from Internet” and then “Airbag Resetting Tool”, click “Next” to update.
5. The resetting tool will display “ADDING MODEL” then “ADD MODEL OK”. When it turns to vehicle screen, update finished.
6. If have problems when updating, please contact the manufacturer.

Appendix

GM Buick

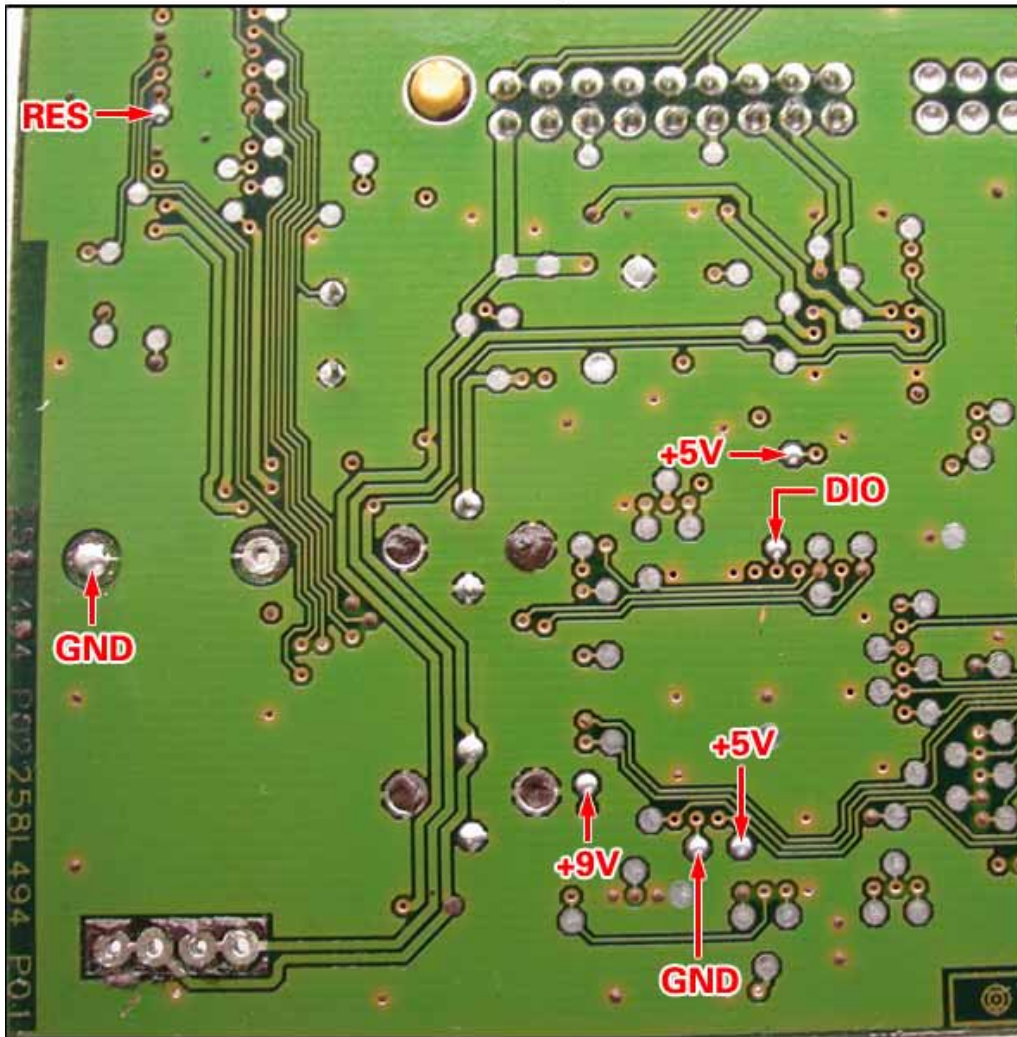
1. Sail



2. Buick GL8

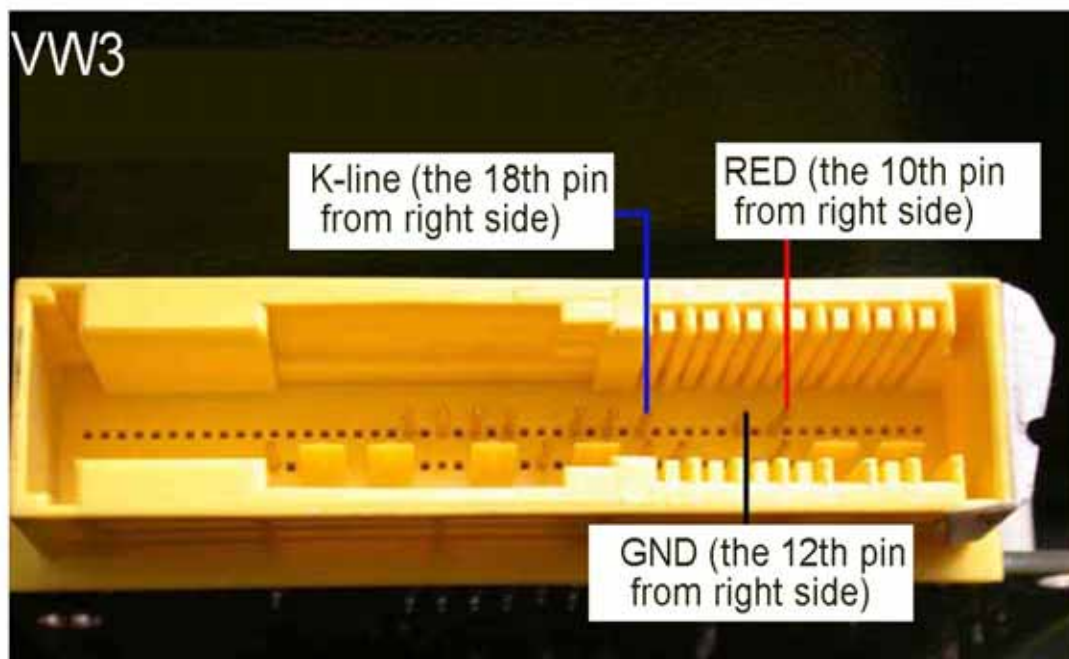
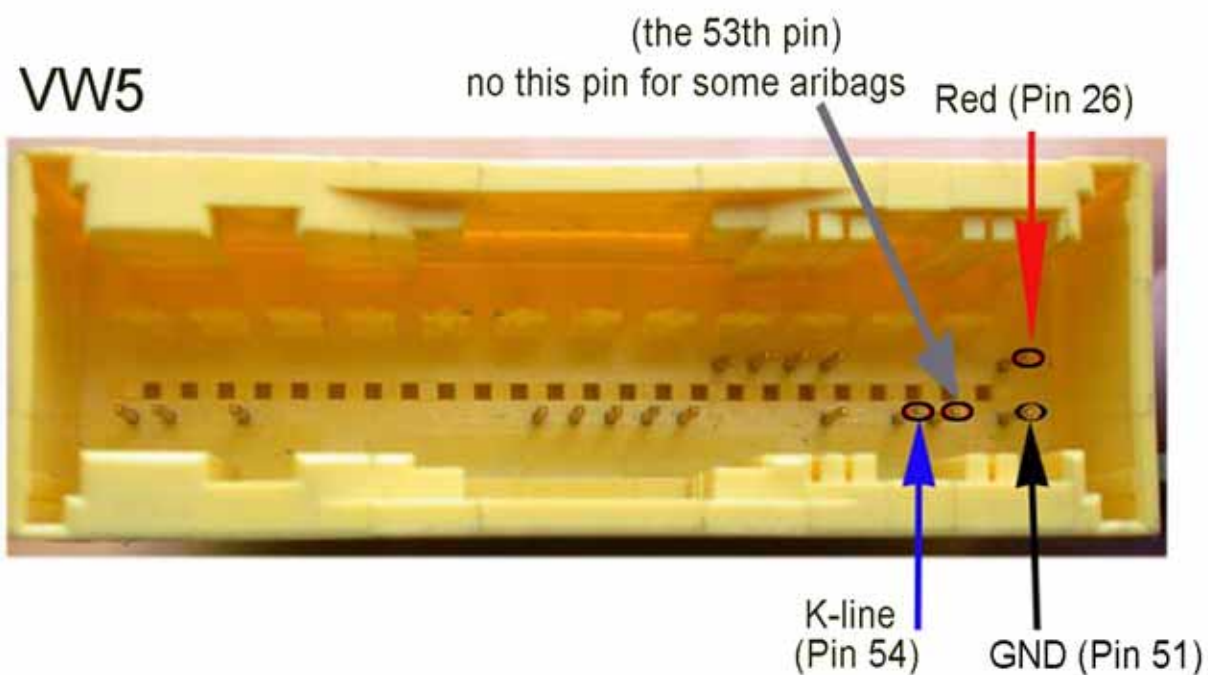


First step



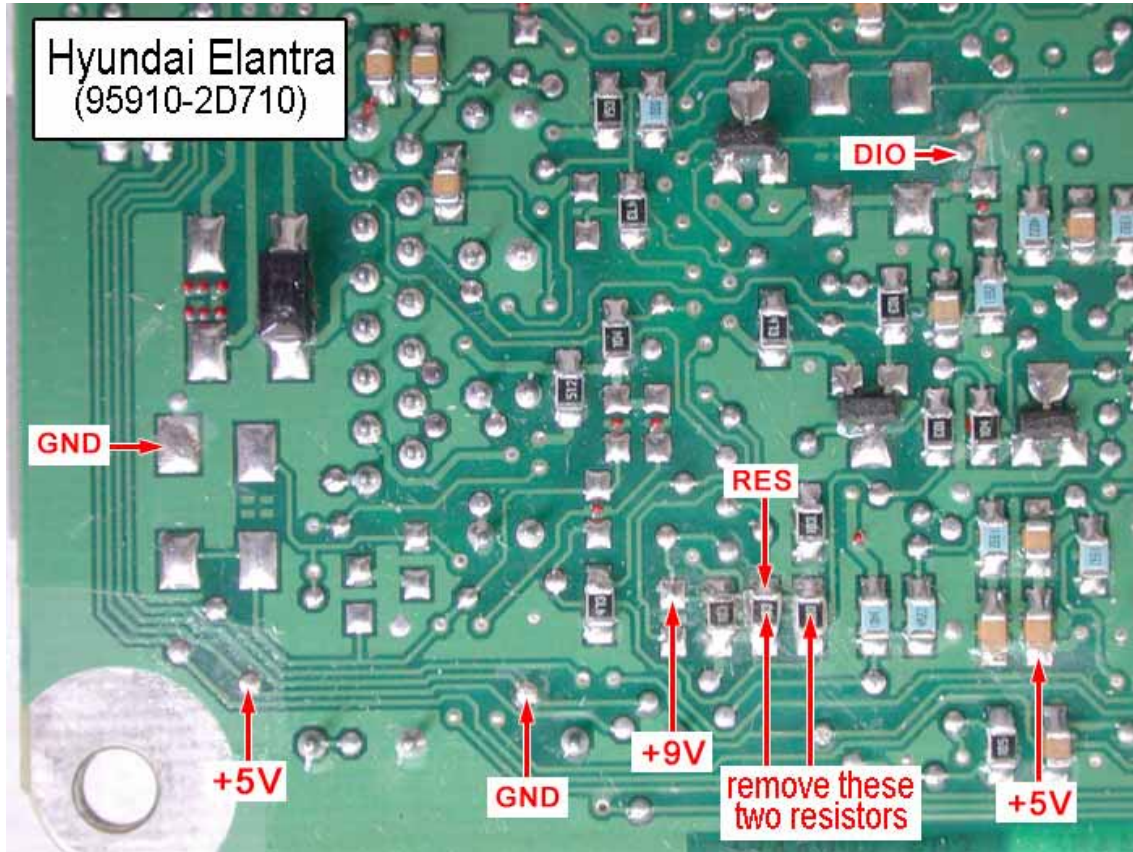
Second step

Volkswagen



Notice: Red wire of Adapter for VW connects to +12V; black to GND and the blue one is the K-line.

Hyundai Elantra



The 7th pin connections

IC	Null	to low volt(低)	to high volt(高)	IC	Null	to low volt(低)	to high volt(高)
93C06	✓	✓	✓	24C04		✓	
93C14	✓	✓	✓	24C08		✓	
93C46	✓	✓	✓	24C16		✓	
93CS46		✓		24C64		✓	
93LC46	✓	✓	✓	24C44			✓
C46M6		✓		25010			✓
S130		✓		25020			✓
93C56	✓	✓	✓	25040			✓
93CS56		✓		25043	✓		✓
93LC56	✓	✓	✓	25045	✓		✓
S220		✓		X25043	✓		✓
93C66	✓	✓	✓	X5043	✓		✓
93CS66		✓		X5045	✓		✓
93LC66	✓	✓	✓	25080			✓
C66M6		✓		25160			✓
B58		✓		25170			✓
93C76			✓	25320			✓
93C86			✓	25640			✓
93LC86			✓	59C11			✓
24C01		✓		85C72			✓
24C01A		✓		85C82			✓
24C02		✓		85C92			✓

Note: when read/write the IC, you need to set the control volt of the 7th pin. Just put the jumper on “low (低)” or “high(高)” side marked on the universal adapter.

Example: For IC 93C86, you need to put the jumper on high(高) side to read/write.

Chip Replacement

Original Device	Replaced by	Note
93C06	93C46	93C06 cannot substitute for 93C46
9314	93C46	9314 cannot substitute for 93C46
C46M6	93C46	
DD72	93CS66	DD72 cannot substitute for 93CS66
DD82	93CS66	DD82 cannot substitute for 93CS66
S220	93CS66	S220 cannot substitute for 93CS66
93C56	93C66	93C56 cannot substitute for 93C66
C56M6	93CS66	C56M6 cannot substitute for 93CS66
CS56	93CS66	CS56 cannot substitute for 93CS66
85C72	24C16	85C72 cannot substitute for 24C16
85C82	24C16	85C82 cannot substitute for 24C16
24C01	24C16	24C01 cannot substitute for 24C16
24C02	24C16	24C02 cannot substitute for 24C16
24C04	24C16	24C04 cannot substitute for 24C16
24C08	24C16	24C08 cannot substitute for 24C16
D6253	24C16 (or 24C01)	D6253 cannot substitute for 24C16
D6254	24C16 (or 24C01)	D6254 cannot substitute for 24C16
PDH001	X2444P (or X24C44)	
PDH004	X2444P (or X24C44)	
X24C01	-----	X24C01, 24C01 cannot use in exchange

Available for

Vehicles	Airbag or car type	
Honda	Accord 2.2(CD5)	Accord 2.3
	Accord 2.4	Odyssey-SXO-A84
	GB-S84-A84 (Guangzhou)	GB-S84-S86 (Guangzhou)
	CRV	SV4-A91
	SV4-A92	S84-A84
	SV4-A93	S84-A86
	Y614	SXO-A84
	Y615	S3N-N93
	Y630	
Toyota	Camry (2002)	33100
	Camry 2.4 (2002)	33260
	VC-52180	52120
	VZ-52180	60110
Nissan	Cefiro (2001)	Bluebird (FENGSHEN)
	209M000	3L400
	7M806	3L405
	A33	4Y715
	Sunny (Non-standard IC)	Paladin (Non-standard IC)
Mitsubishi	MB942715	268154
	268157	942715
	Outlander	
Volkswagen	VW3/VW5/VW6 airbags	Polo
Hyundai	Sonata	Elantra
GM	GL8, Regal, Excelle, SAIL	
Mazda	B30E57K30B, M6	
Ford	Mondeo	
Citroen	Elysee	

- Note:** 1. For GL8 and Regal, select “GM Buick”;
 2. VW airbag controllers reset by K-line or OBD-II line; For Polo controller, you need to remove the device.

How to remove and weld the device

I .Welding preparation

1.Soldering Iron selection

Soldering iron must connect to reliable GND, If have no constant temperature soldering iron, then select the soldering iron of 20W (heater inside) or iron of 25W (heater outside); The inside one should be less than 25W, the outside should be less than 30W.

2.Welding-aid selection

Use rosin as welding-aid substance, never use strong corrosive soldering tin paste, if rosin has been carbonized & becomes black, replace it.

3.Soldering wire selection

Select rosin activated core wire with low melting point.

II .Chip Dismounting

1.When removing DIP device, use a suction gun or suction pipe to clean welded tin. Do not pull it by force.

2.When removing SMD device, smelt more rosin to the pins and use soldering iron to heat the pins until the device gets entire loose, and then remove it. Do not pull it by force.

3.Heating time should not be too long to avoid any damage to the chip.

4.The chip on board commonly protected by protecting lacquer, use soldering iron to heat protecting lacquer at first (heat to 70-80°C), then remove the chip after the protecting lacquer cleaned.

III.Chip welding

1.Welding time should not be too long to avoid any damage to the chip

2.Soldering iron is easy oxidized in high temp for a long time, clean the head of the soldering iron often to keep it clean.

3.Heat transferred by soldering tin when welding, put soldering iron head on chip will do no good to welding.

4.The chip shall not be moved or quivered before welding concreting.

5.When welding SMD, weld two diagonally pins to fix chip first, then weld others.

How to identify the device pin's sequence

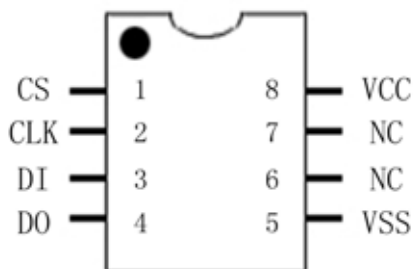
IC	Method
IC with a cut	Put chip as diagram shown below. The first left pin of the bottom row is Pin 1. The pins sequence is P1, 2, 3, 4, 5, 6, 7, and 8 in counterclockwise.
IC with ●	Put chip as diagram shown below. the pin near ● is Pin 1. The pins sequence is P1, 2, 3, 4, 5, 6, 7, and 8 in counterclockwise.
IC with character only	Put chip as diagram shown below. The first left pin of the bottom row is Pin 1. The pins sequence is P1, 2, 3, 4, 5, 6, 7, and 8 in counterclockwise. (Pay attention to the character)



93C56

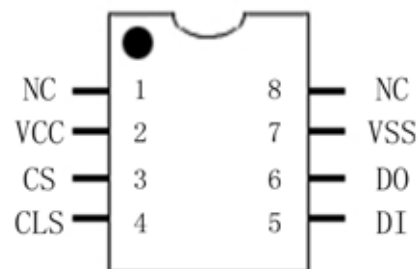
Standard and Non-standard 93C46, 93LC46, LC46

1. C46 has Standard and Non-standard, most are standard.
2. Non-standard ones are used in some controllers, such as Sunny, Bluebird and Paladin and etc.
3. For Non-standard chips, should select “Device Operation”→“Non-standard 93C46” to read/write.



Standard package pins layout and features

On board, Pin5---GND; Pin7---Null
or Pin6, Pin7, Pin8 connect together



Non-Standard package pins layout and features

On board, Pin7--GND; Pin1--Null
or Pin1, Pin2 connect together

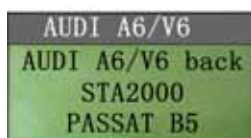
Trouble shooting

Failure	Possible Causes	Solution
Device not found	1. Bad wire connection	1. Check for the connection and device. 2. Refer to the Appendix to set the 7th pin's control volt
	2. Device not well welded or short	
	3. Device damaged	
	4. Adapter not well inserted	
	5. Volt for the 7th pin not correct	
Device program failed	As above	As above
No respond	1. Wire connection error	Pull out power supply and plug in again
	2. In "CONNECTING". Connect Buick needs 30 seconds; connect VW needs 15 seconds.	Please wait a moment.

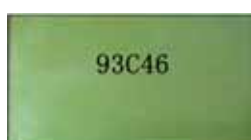
. IMMO READ CODE

Operation

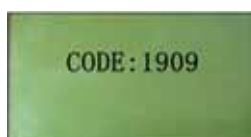
1. Remove the chip from board, then well weld/insert it onto/into the adapter.
2. Start the instrument, select “IMMO READ CODE” and press ▲or▼ to select a vehicle, say AUDI A6/V6.



3. Press “OK” then the device used displays.



4. Press “OK” to read out the code (4-digit code).



5. If cannot read the code, please try with “AUDI A6/V6 back”.

Error Warning

1. CHIP NOT FOUND

Possible caused by: ① The chip selected is not with that on the adapter; ② Device not well welded/inserted; ③ Adapter not well inserted; ④ Chip damaged.

2. INVALID CODE

Possible reasons: ① Model selected not correct; ② No code data in device or data lost.

Available for

AUDI A6/V6	AUDI A6/V6 back
AUDI A6/C5 D03	AUDI A6/C5 D04-D09
STA2000	POLO (6Q0920800)
PASSAT B5 1.8	PASSAT B5 1.8T
BORA (6A, 6B) (1J5920806B, 1J5920826A)	BORA (5A, 5B) (1J5920805B , 1J5920825A)